

SMA Connector Series

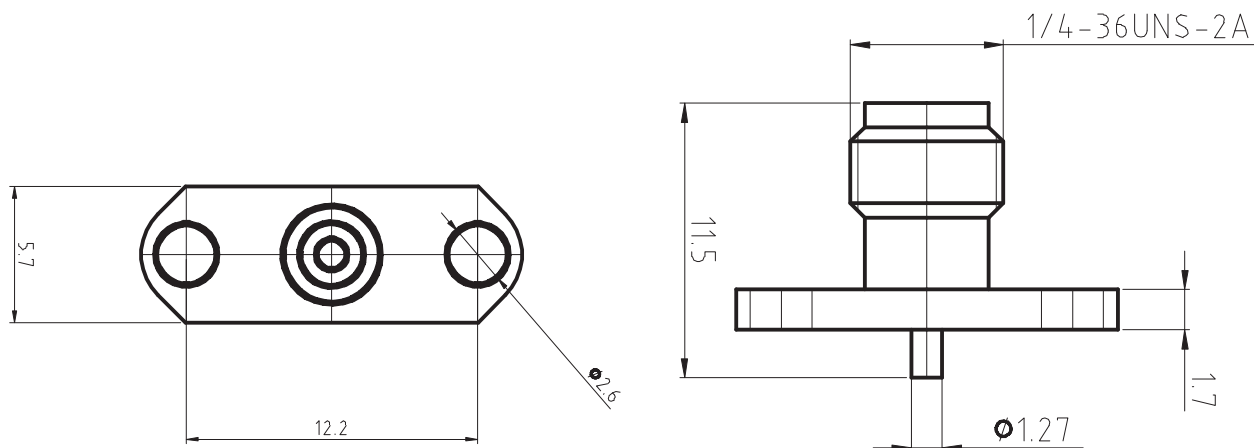
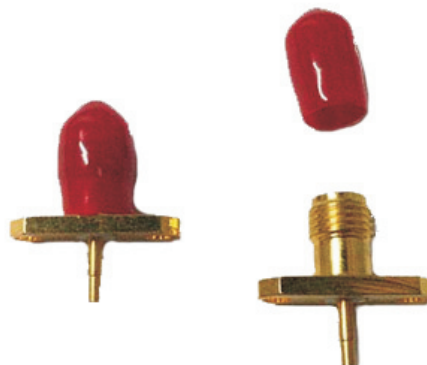
KLS1-SMA-KFD-L16 SMA Connectors

Material:

Connector body: Brass per QQ-B-626 ,gold Plating or nickel
Center contact Male: Brass, gold Plating
Center contact Female: Beryllium copper, gold Plating

Electrical Specifications:

Impedance: 50 Ω
Frequency Range: DC ~ 12.4GHz
Voltage Rating: 335 volts rms.
Dielectric Withstanding Voltage: 1000V rms
VSWR : $\leq 1.10 + 0.002f$ for Straight connector typical;
 $\leq 1.20 + 0.003f$ for Right angle connector typical
Contact Resistance Center contact: ≤ 3 m Ω ; Body: ≤ 2 m Ω
Insulation Resistance: ≥ 5000 M Ω
Temperature Range: - 65°C to +165°C



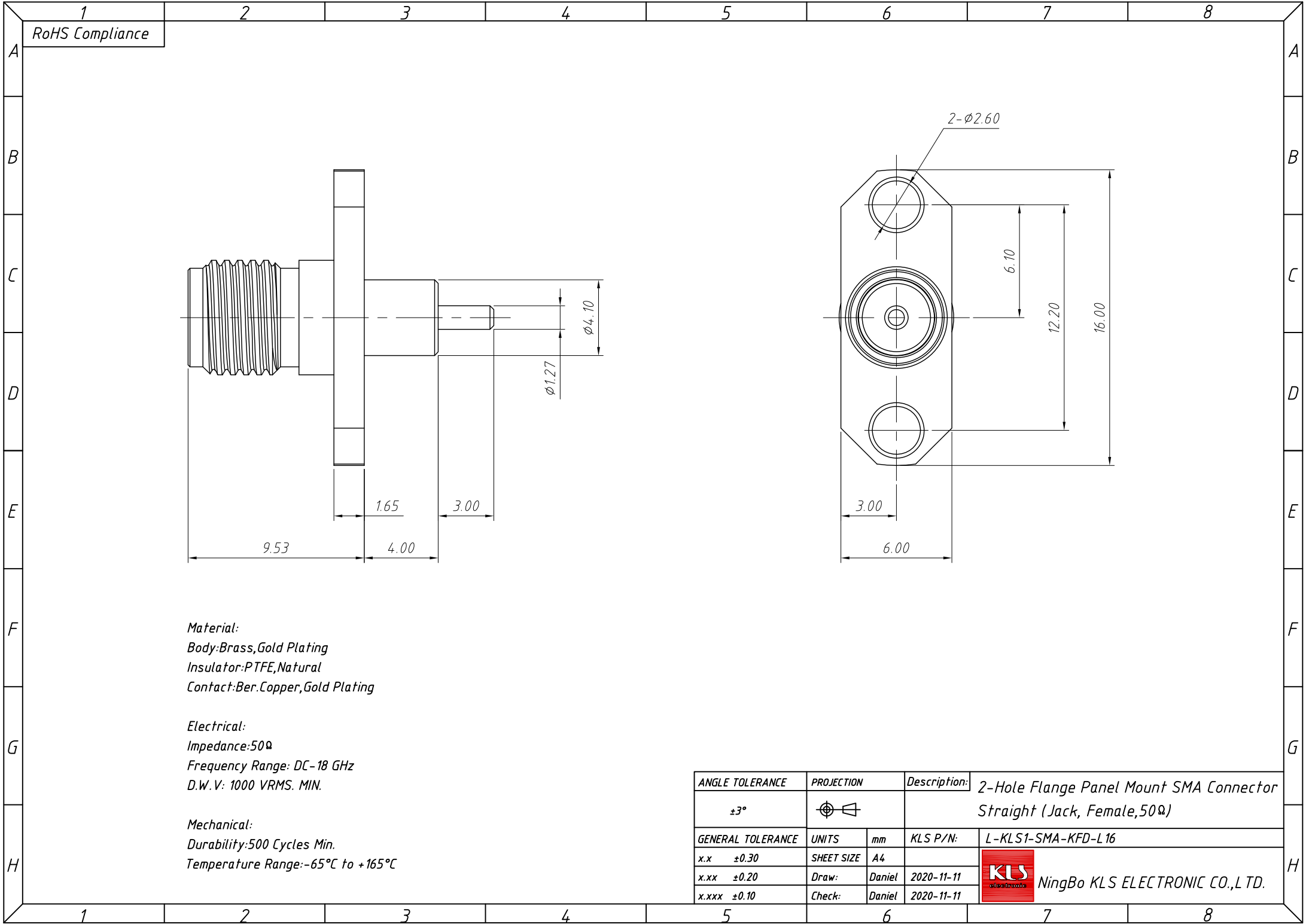
ORDER INFORMATION

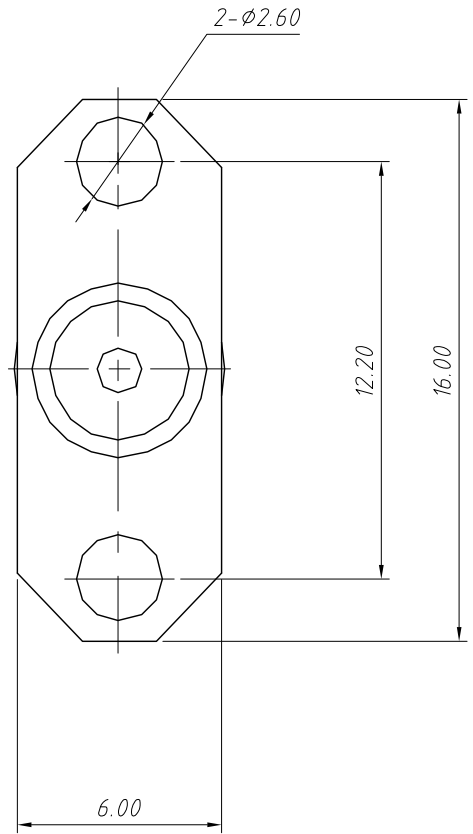
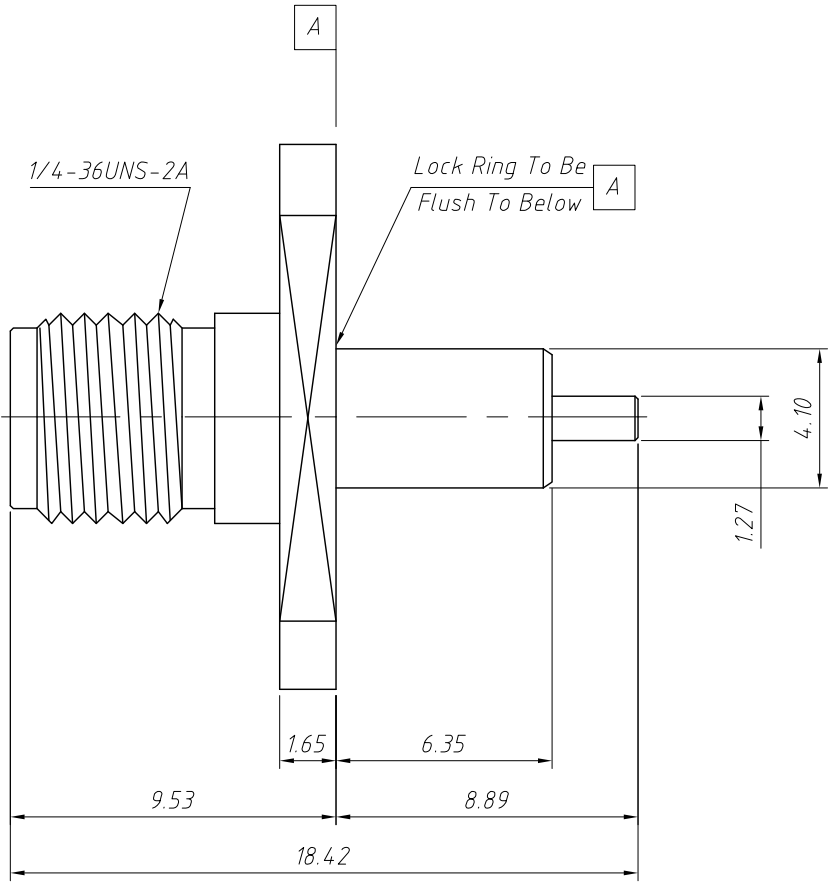
Product NO.: L-KLS1-SMA-KFD-L16

Pos. NO.

SMA Connector

Length: 16mm







Material:
Body:Brass,Gold Plating
Insulator:PTFE,Natural
Contact:Ber.Copper,Gold Plating
Ring:Brass,Gold Plating

Electrical:
Impedance:50Ω

Mechanical:
Durability:500 Cycles Min.
Temperature Range:-65°C to +165°C

| | | | | | |
|-------------------|---|--------|--------------|---|--|
| ANGLE TOLERANCE | PROJECTION | | Description: | 2-Hole Flange Panel Mount SMA Connector Straight (Jack, Female,50Ω) | |
| ±3° |  | | | | |
| GENERAL TOLERANCE | UNITS | mm | KLS P/N: | L-KLS1-SMA-KFD-L18.4 | |
| x.x ±0.30 | SHEET SIZE | A4 | |  NingBo KLS ELECTRONIC CO.,L TD. | |
| x.xx ±0.20 | Draw: | Daniel | 2020-11-11 | | |
| x.xxx ±0.10 | Check: | Daniel | 2020-11-11 | | |

6.00

Temperature Range: -65°C to +165°C

